

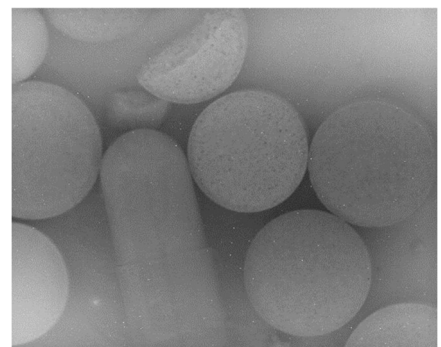
BV-C2901 Air Cooling SWIR VGA Camera

The BV-C2901 uses a VGA InGaAs sensor with a built-in Peltier having the sensitivity from 950nm to 1700nm. Additionally, it employs an Air Cooling system and maintains the sensor temperature at -10°C to suppress the increase of the dark current. As a result, it achieves high signal to noise ratio with two seconds exposure time.



Key Features

- ◆ High signal to noise ration under 2 seconds exposure time
Peltier (built-in sensor) and using additional air cooling system maintains the sensor temperature at -10°C.
- ◆ Employs InGaAs VGA sensor with pixel size of 20μm
- ◆ 62 fps of the maximum frame rate
- ◆ 8/10/12/14bit for the video output
- ◆ C mount of 1-inch or larger format
- ◆ GigE or CameraLink interface



-10°C / 2 seconds exposure time

Option Unit

BVA-AC06P3A

Power supply unit



This is a power supply unit for BV-C2901.

Input: 100V~240V,
50Hz/60Hz
Output: DC12V, 3A
Weight: 330g

C mount lens



SWIR C mount lens is available from BlueVision.

20mm, 24mm, 28mm, 35mm, 50mm and 105mm are available for choice.

Image size: 15mm (H)
Iris range: F2.8 ~F22

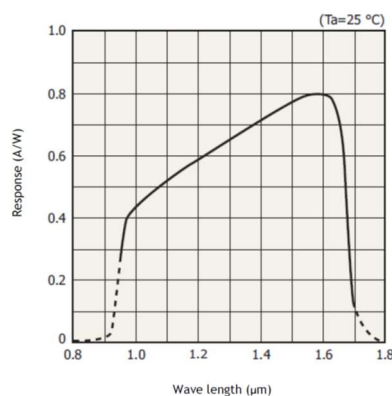
Specifications

Item	BV-C2901-GE	BV-C2901-CL
Image sensor	G12242-0909W 2 step electronic cooling (Peltier) InGaAs sensor Effective pixel: 640(H) x 512(V), Pixel size: 20 μ m x 20 μ m Effective Image area: 12.8mm x 10.24mm	
Cooling	Combination of Peltier and Air Cooling keep -10 $^{\circ}$ C (Ta=25 $^{\circ}$ C) : Default = -10 $^{\circ}$ C	
Wave bandwidth	950nm ~ 1700nm	
Sensor conversion efficiency	1 μ V/e-	
Synchronization	Internal / External trigger	
Pixel clock	25MHz Data rate: 6.25MHz (4 port readout)	
Frame rate	At Exposure time: 1 clock (1 μ sec) : 62fps / At Exposure time: 16msec: 31fps	
Video S/N	55dB	
Video output	8/ 10/ 12/ 14 bit	
Electronic shutter	Global shutter	
Gain	0dB ~ +30dB	
Black level	0LSB ~ 127LSB (at 10-bit)	
Blemish compensation	Built in compensation circuit	
Shading compensation	Flat shading compensation: ON/OFF	
PRNU	Pixel luminance level compensation	
DSNU	Pixel dark level compensation (Lens cap on)	
Communication interface	Gigabit Ethernet (1000BASE-T) SDK-TransFlyer (made by Aval Data)	CameraLink (Base configuration)
Lens mount	C mount (1-inch or larger format)	
Regulation	RoHS, CE	
Power supply	DC +12V \pm 10%	
Operating temperature /humidity	-5 $^{\circ}$ C ~ +45 $^{\circ}$ C / 20% ~ 80% (Non-condensing)	
Dimensions (WxHxD)	95(W) x 95(H) x 129(D)mm (excluding protrusion)	
Weight	1090g	1100g

Rear panel



Quantum efficiency



- Specifications are subject to change without prior notice.
- This product is in the scope of Export Trade Control Order and requires export license.

BlueVision Ltd., Japan

3-17-2 Shin-Yokohama, Kohoku-ku
Yokohama, Kanagawa 222-0033 JAPAN
TEL: 045-471-4595 / FAX: 045-471-4598
E-mail: sales@bluevision.jp
URL: <http://www.bluevision.jp>

